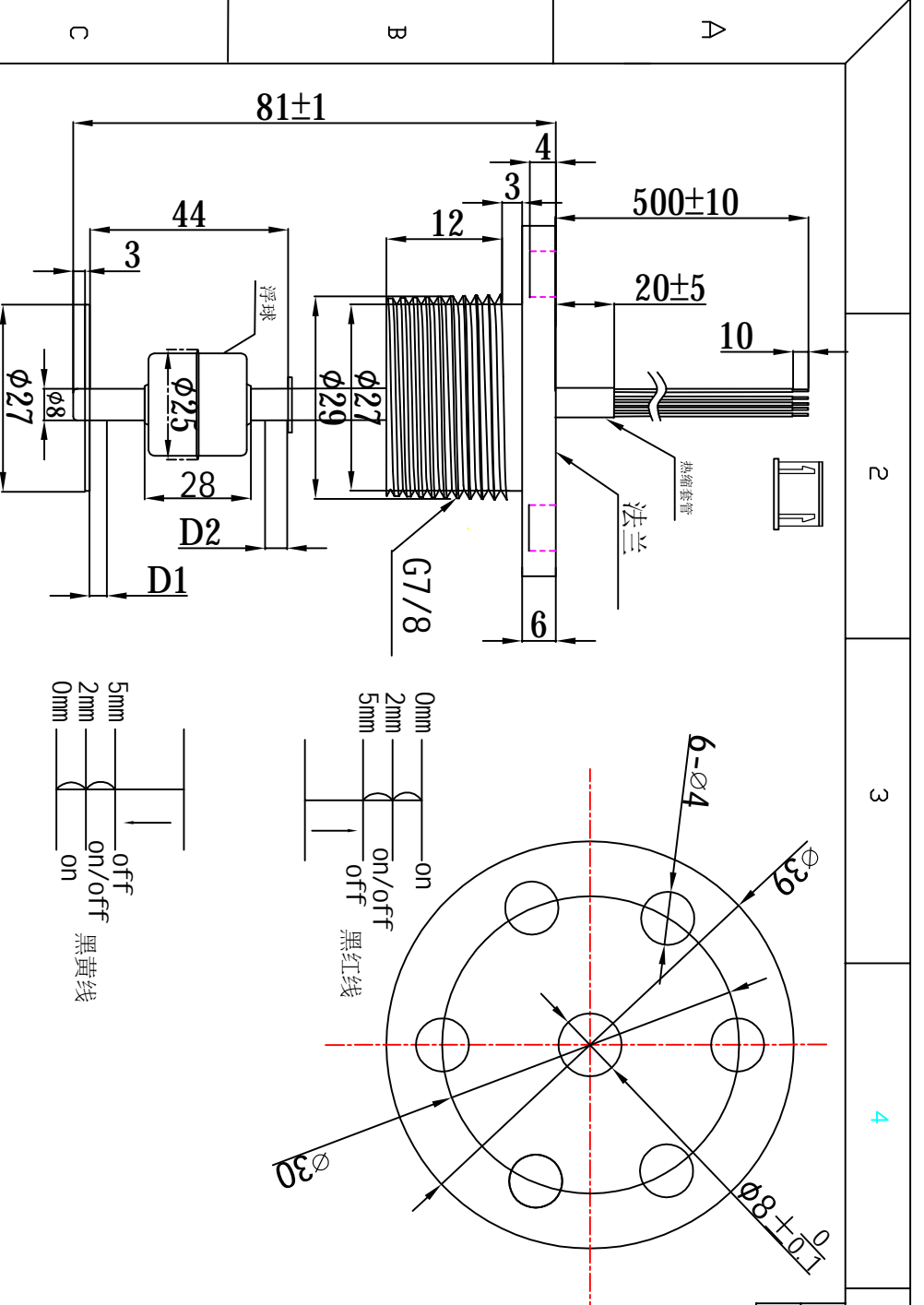


更改	日期	说明	修改人	审核



Material Specification		Switch Characteristic		Operating Characteristic	
1. Float body: SUS316		1. Contact from: 簧管描述		1. Resonant Frequency: 2500Hz	
2. Float ball: SUS316		2. Max Contact Rating: 10 W		2. Max Operating Frequency: 500Hz	
3. E-Ring: SUS316		3. Max Switching Voltage: 100VDC		3. Temp. operating: -10~+125° C	
4. Screw nut: SUS316		4. Min Breakdown Voltage: 220Vdc		4. Humidity: 95%RH(80° C)	
5. Wire: UL1332 #24 黑、红、黄、白		5. Max Switching Current: 2.5A		5. Application: 应用 Water float sensor	
6. Max Contact Resistance: 100mΩ		6. Max Breakdown Voltage: 220Vdc		6. Max Contact Resistance: 100mΩ	
7. Min Insulation Resistance: 10 ¹⁰ Ω		7. Min Insulation Resistance: 10 ¹⁰ Ω		7. Min Insulation Resistance: 10 ¹⁰ Ω	

动作说明:

- 当浮球从顶部下降到D1位置时, 则在2mm≤D1接通、D1≤5mm断开, 并保持D1=0mm, (浮球从顶部下降到D1位置时, 在0mm-2mm之间接通, 在5mm时断开) (黑黄线)
- 当浮球从底部上升到D2位置时, 则在2mm≤D2接通、D2≤5mm断开, 并保持D2=0mm, (浮球底部上升到D2位置时, 在0mm-2mm之间接通, 在5mm时断开) (黑红线)

注: 白色线材连接的是KNTC热敏电阻R25=30K

Unit: mm
未注公差:

- x ±0.5
- x. x±0.3
- x. xx±0.2

单位:	mm	名称:	KSSI-80A-1L-1H
视角:		比例:	1:1
用途:	/	制图:	版本: A0
处理:	/	校对:	图号: /
材质:	SUS316	审核:	张: 1/1

Material Specification		Switch Characteristic		Operating Characteristic	
1. Float body: SUS316		1. Contact from: 簧管描述		1. Resonant Frequency: 2500Hz	
2. Float ball: SUS316		2. Max Contact Rating: 10 W		2. Max Operating Frequency: 500Hz	
3. E-Ring: SUS316		3. Max Switching Voltage: 100VDC		3. Temp. operating: -10~+125° C	
4. Screw nut: SUS316		4. Min Breakdown Voltage: 220Vdc		4. Humidity: 95%RH(80° C)	
5. Wire: UL1332 #24 黑、红、黄、白		5. Max Switching Current: 2.5A		5. Application: 应用 Water float sensor	
6. Max Contact Resistance: 100mΩ		6. Max Breakdown Voltage: 220Vdc		6. Max Contact Resistance: 100mΩ	
7. Min Insulation Resistance: 10 ¹⁰ Ω		7. Min Insulation Resistance: 10 ¹⁰ Ω		7. Min Insulation Resistance: 10 ¹⁰ Ω	